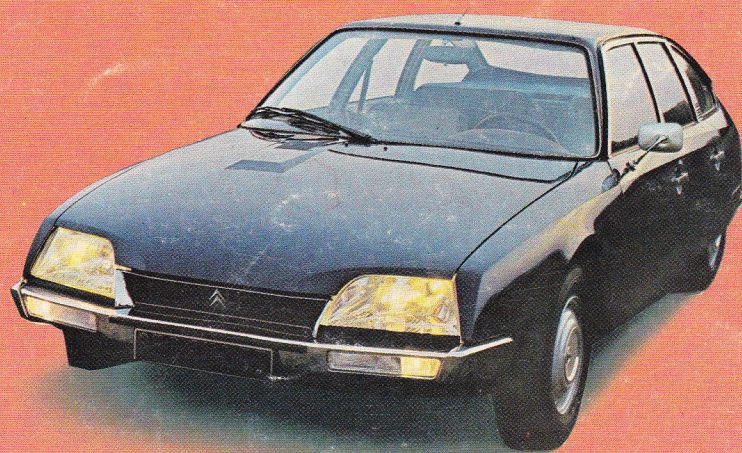
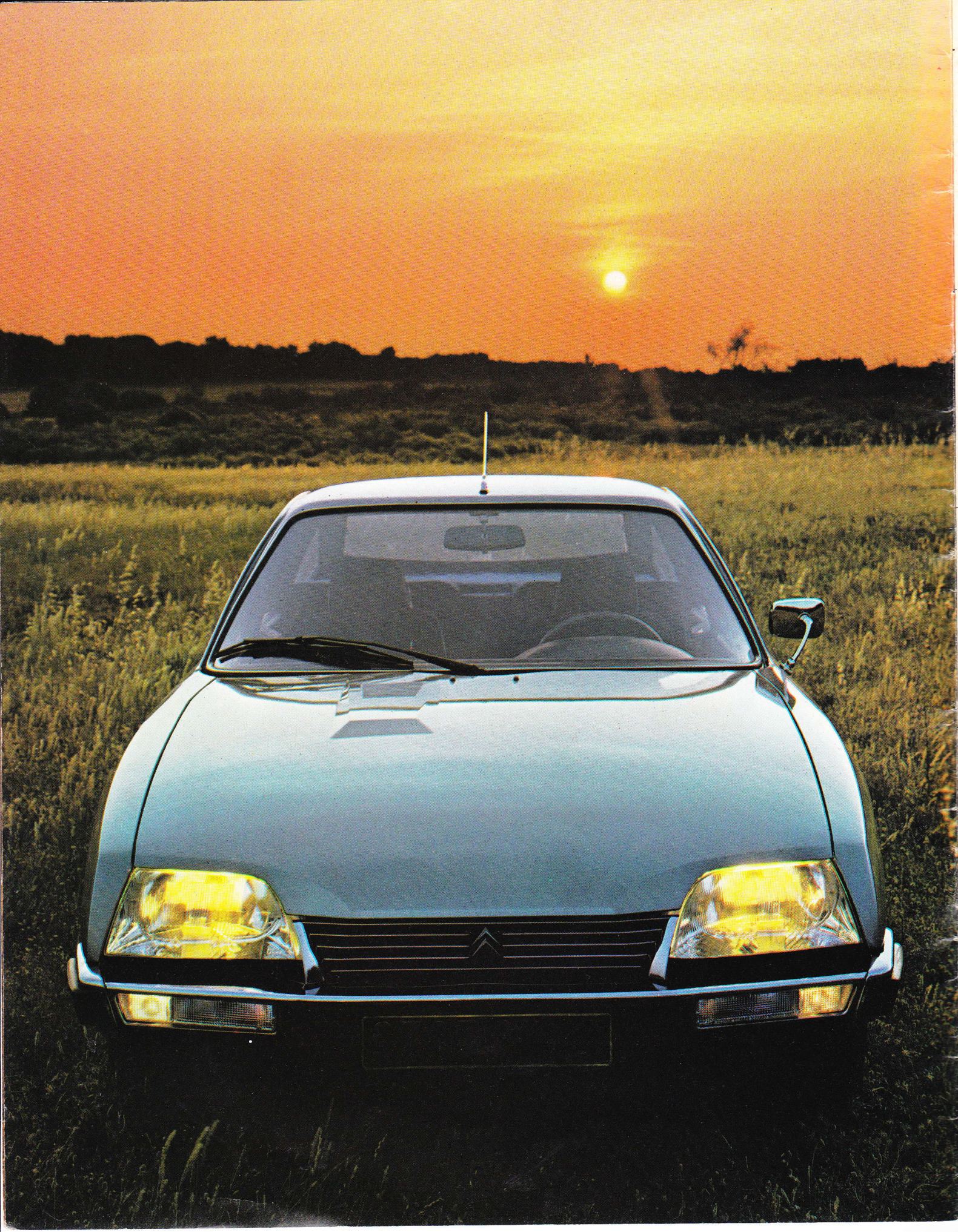


CITROËN  CX





Few cars have been so well received as the new Citroën CX. From the time of its launch, it has been an international success. It was voted European Car of the Year by an overwhelming margin. It has been awarded special prizes for Design and Safety.

Now, for 1977, the Citroën CX is a whole range of saloon cars and estates offering a wide choice of specifications and price levels.

The new CX2400 Super, CX2400 Pallas and CX2400 Safari estate have the more powerful 2347cc engine. This improves acceleration and top speed, yet still achieves remarkable fuel economy.

This is also the year of the CX Diesel. The new CX2200 D saloon and estate combine the refinements of CX motoring with the extra economy of diesel power.

Another new model is the CX Prestige. This beautiful limousine has the 2347cc engine, a lengthened body and magnificent interior luxury and refinements.

All CX models - including the CX2000 Confort - are now available with VariPower steering, and the CX2400 Super and Pallas offer the option of C-matic transmission.

With this enlarged CX range, the long supremacy of the big Citroëns continues. These cars are unmatched for quality of engineering, comfort, safety and now choice.

WHY THE CX LOOKS SO GOOD.

'Surely one of the world's most beautiful production cars of all time,' was Motor magazine's view of the Citroën CX.

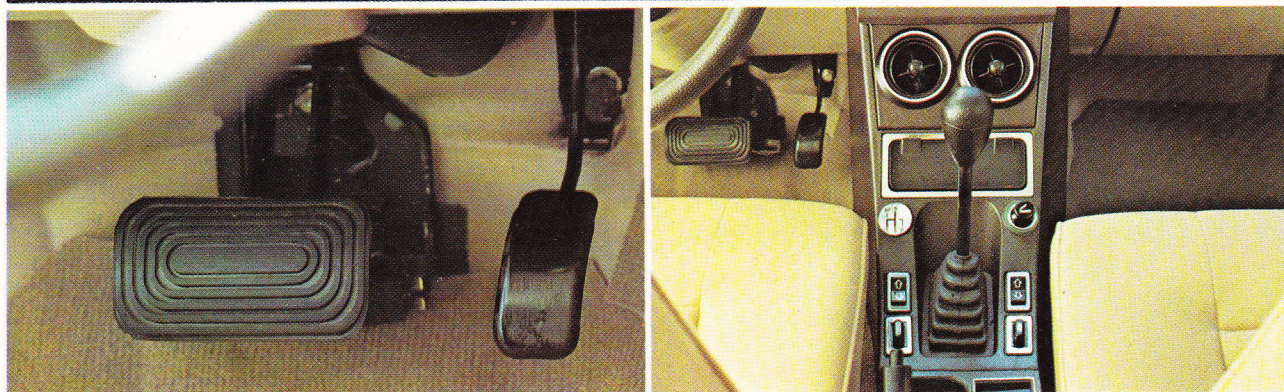
John Langley in the Daily Telegraph agreed, rating the CX 'one of the most beautiful saloons we have yet seen.'

Wherever a Citroën CX is seen — on the road, in a car park, standing in your drive — its lines impress.

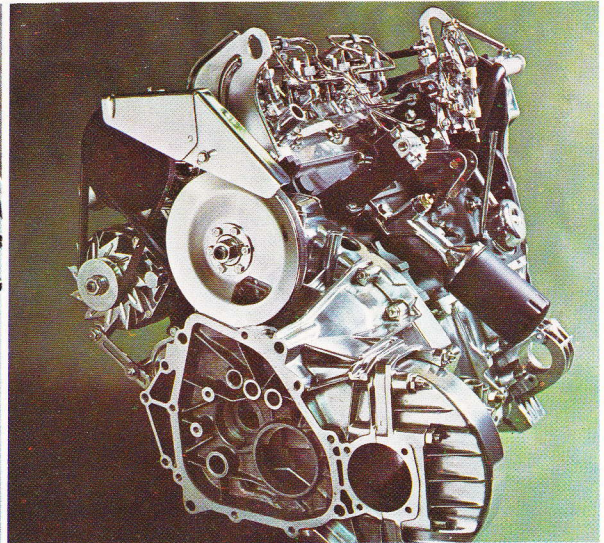
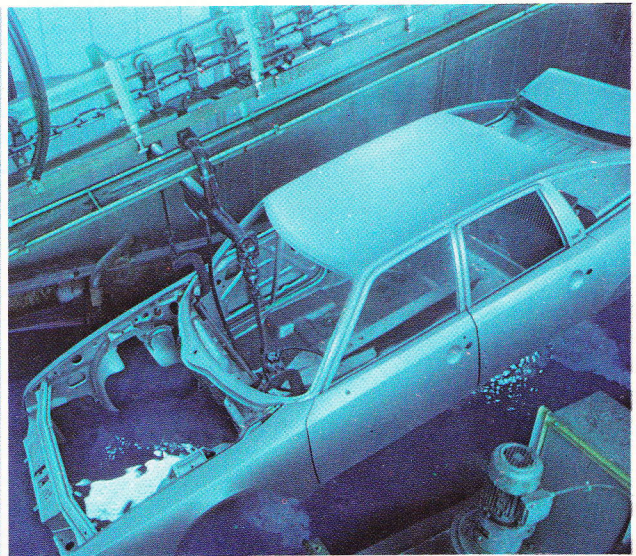
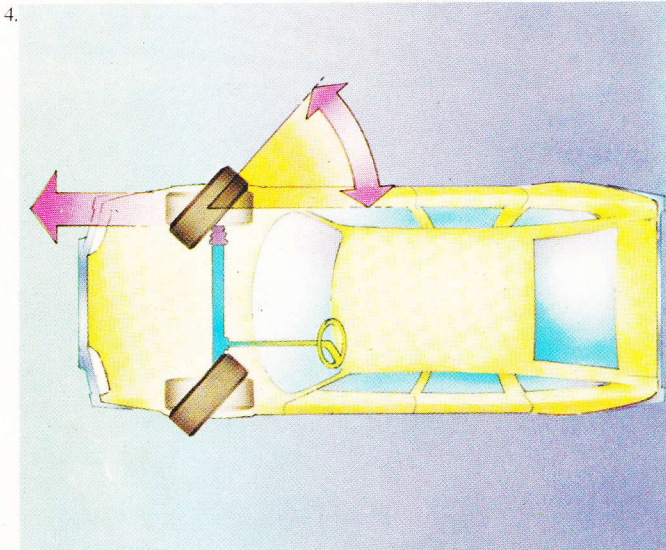
For good reasons, because every aspect of the CX design has a functional purpose. These are lines drawn to give you optimal safety, economy, performance, quietness and comfort.

These benefits derive from the study of car aerodynamics, structure and engineering, in all of which the famous Citroën Bureau d'Etudes is a world leader. With its low, wind-cheating shape, smooth underside and spacious interior, the CX design is the advanced result of years of Citroën research, development and production experience.

At first sight, the CX looks a thoroughbred car. To drive and to own one prove that, in the case of the Citroën CX, first impressions are not misleading.



1. 'CX' is an engineering symbol for efficient aerodynamics. The smooth, flowing lines of the Citroën CX offer minimal wind resistance, better performance and economy.
- 2/3. C-matic torque convertor transmission with 3-speed gearbox is available at extra cost on the CX2400 Super and Pallas. C-matic eliminates the clutch pedal, and makes driving exceptionally smooth and relaxed. Engine braking is the same as with manual transmission.
4. Power-assisted steering is now standard on all CX models. The Citroën VariPower system gives variable 'feel' as speed changes and prevents the wheels being deflected by stones or road irregularities. It power-returns to a straight line position when the steering wheel is released. It makes parking the car featherlight easy.
5. Your CX will look good for a long time. Complete immersion in an electrophoretic anti-corrosion bath is followed by five separate paint applications. All CX models for Britain have special tectyl underbody protection.
6. The large single windscreen wiper sweeps a broader area than the conventional two wipers.
7. More power: the new CX2400 Super, Pallas and Safari now have the more powerful 2347 cc engine. The CX engines — 2347 cc and 1985 cc — are modern 5-bearing water-cooled units, transverse mounted. The CX2200D saloon and estate have the very economical, very longlasting Citroën 2175cc diesel engine. (illustrated).



WHY THE CX IS SO SAFE.

When carmakers talk about 'primary' safety, they mean a car's ability to keep you out of trouble.

In all respects, CX handling is exemplary. Its roadholding, deriving from the unique Citroën solution of front wheel drive combined with hydropneumatic suspension, is tenacious.

Its VariPower rack-and-pinion power steering is precise and positive. Sophisticated Citroën steering geometry means that the axis of rotation of the wheels passes through the point of tyre contact with the road. The result is undeviating straight-line stability, even in emergency braking situations.

The four-wheel disc braking system consists of a front circuit and a separate rear circuit. The discs are of the ventilated type at the front on saloons, and on all four wheels on the Safari. The whole

system is power operated. Tyres are longlasting Michelin radials with built-in front wear indicators.

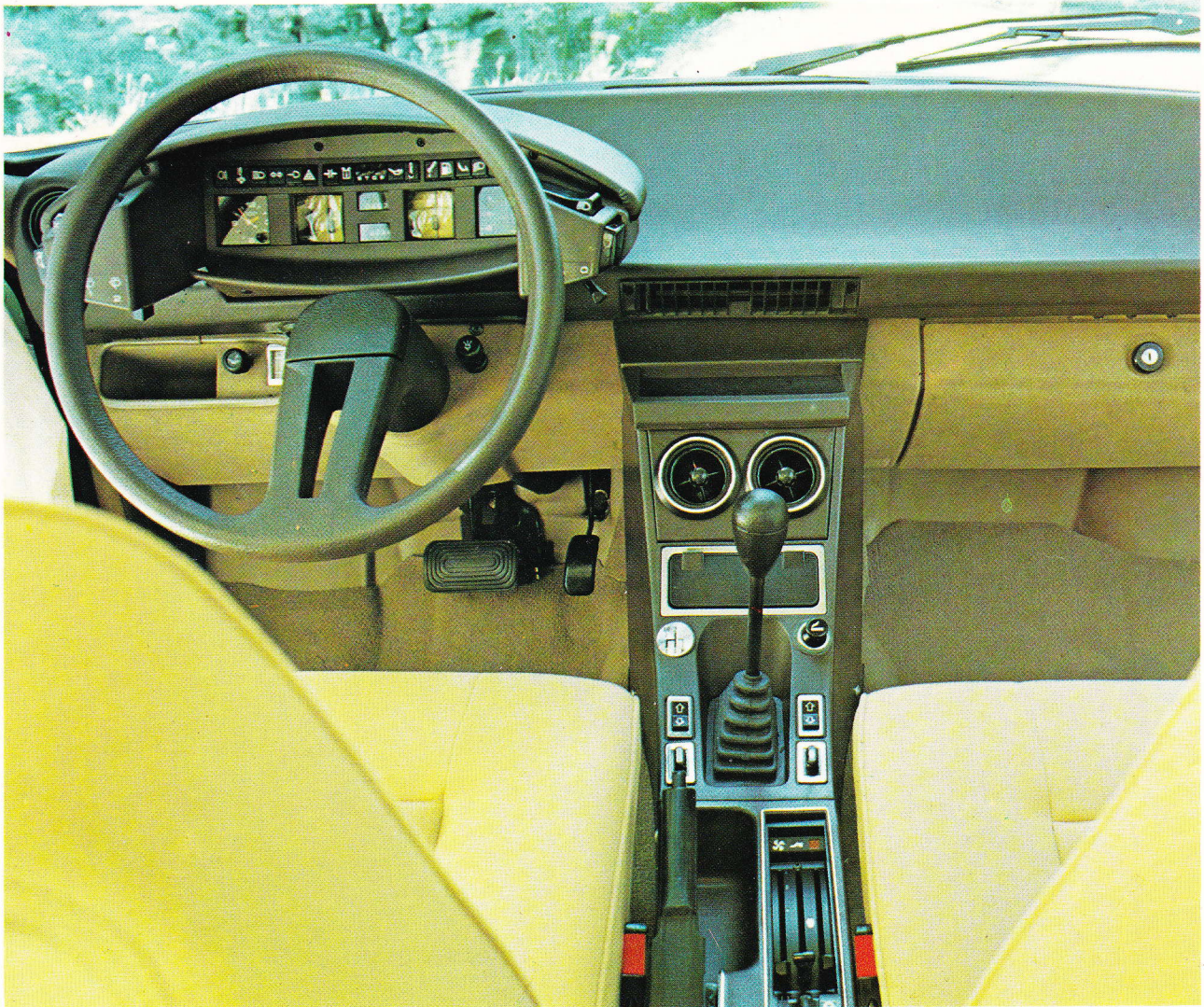
You have ample power in reserve for all emergencies, panoramic visibility, and a rational control layout planned for instant response.

The CX is also exceptionally strong on all aspects of 'secondary' safety.

The body shell is a separate unit joined by flexible mountings to an underframe. The passenger compartment section is rigid, while the front and rear panels and underframe absorb impacts.

Inside the car, there are no hard projections. All is recessed, foam padded or softly covered.

Every driver trusts his car with his life. This is why the Citroën CX is designed to be one of the safest cars in the world.



1. The collapsible zones of the CX body shell are designed to absorb impact energy.

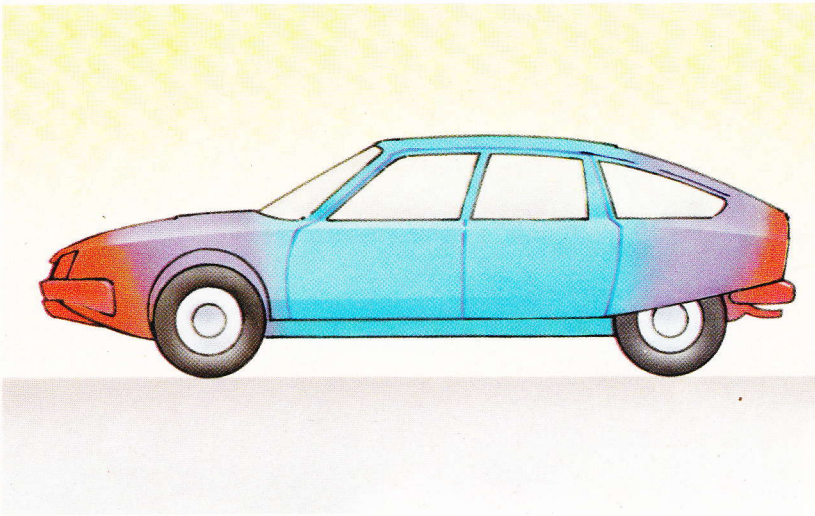
2. The profile of the door interiors follows the shape of the human body. Every detail of the CX has been carefully considered — to make it a safer car.

3. Clear vision all round: the CX has a very large glass area and blind spots have been eliminated.

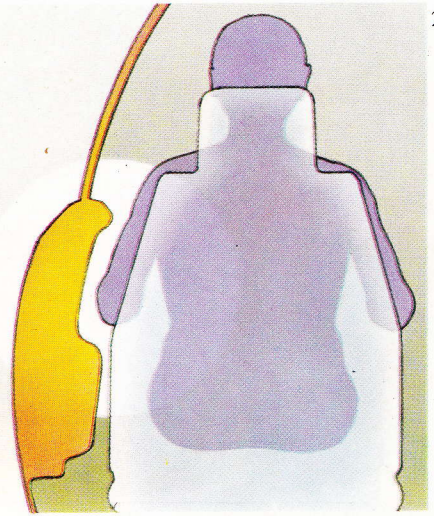
4. Primary safety depends on a car's handling qualities. Front wheel drive and hydro-pneumatic suspension combine to give the CX immaculate roadholding. Should you have a blowout or even lose a wheel, the car, held up by the suspension, will continue in a straight line on three wheels.

5. Michelin radial tyres fitted to every CX are unmatched for roadholding and wearing qualities.

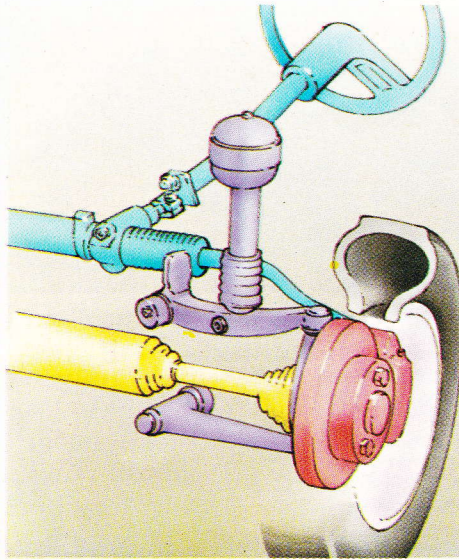
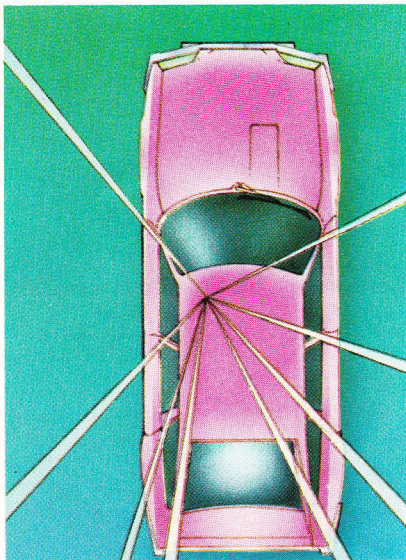
1.



2.



3.

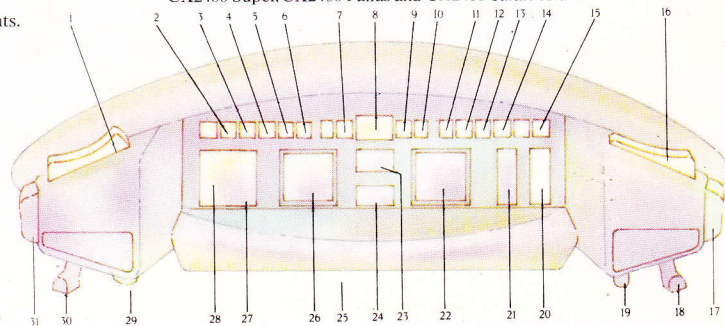


4/5.



1. Control for direction indicators.
2. Yellow warning lamp: for parking and emergency brake.
3. Blue warning lamp: for headlamp main beam.
4. Green warning lamp: for direction indicators.
5. Green warning lamp: for sidelights.
6. Red warning lamp: for hazard warning lights.
7. Red warning lamp: for the hydraulic system pressure.
8. Red light indicating urgent need to stop.
9. Red warning lamp: for engine oil pressure.
10. Red warning lamp: for water temperature.
11. Red warning lamp: for engine oil temperature.
12. Red warning lamp: low fuel
13. Yellow warning lamp: for brake pad wear.
14. Orange warning lamp: for dipped beam.
15. Yellow warning lamp: for heated rear window.
16. Control switch for dipped beam.
17. Headlamp flasher control.
18. Switch for headlamps, sidelights and tail lights.
19. Switch for dashboard lighting (rheostat).
20. Battery charge indicator.
21. Fuel gauge.
22. Electronic tachometer.
23. Total mileage recorder.
24. Trip mileage recorder.
25. Trip mileage reset button.
26. Speedometer.
27. Clock reset button.
28. Electric clock.
29. Hazard warning switch.
30. Windscreen wiper and washer control.
31. Horn control.

These specifications apply to the CX2400 Super, CX2400 Pallas and CX2400 Safari estate.





WHY THE CX IS A JOY TO DRIVE.

The futuristic dashboard of the CX is planned for safe driving in modern traffic.

Instrumentation is complete. The shape and design of the control panel is aesthetically pleasing, and in total accord with the good design environment of the CX.

Most important of all, this panel makes control of the car simple and certain.

The speedometer and tachometer are boldly legible, read at the briefest glance.

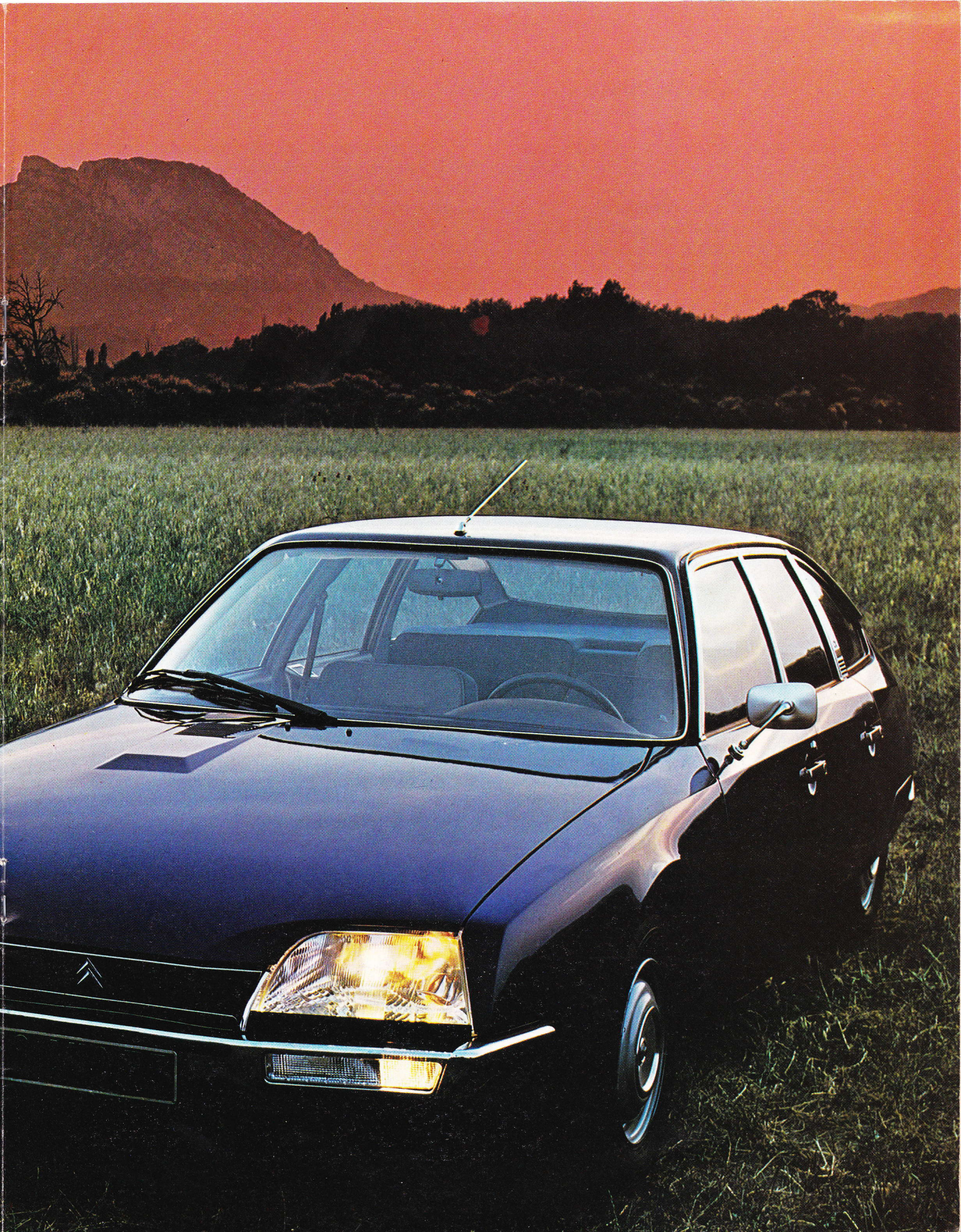
Warning and information lights are positioned in a single line. All are clearly visible through the unique Citroën padded steering wheel.

The essential controls are arranged in two groups, and can all be actioned without the driver's hands leaving the steering wheel.

On the left, you have indicators, horn, 2-speed wipers, electric washers and hazard warning lights.

On the right, sidelights, dipped headlights, main beam, flasher.





ONE OF THE WORLD'S MOST COMFORTABLE CARS.

In a CX road test, Autocar reported 'a quite extraordinary ability to soak up the very worst road irregularities.'

The same report also concluded that 'the room and comfort in the rear of the car are unrivalled within the overall length.'

These comments sum up the special qualities of CX comfort.

For the driver, an extraordinary ability to cope with all types of surface. For passengers, a spacious interior and smooth, comfortable ride.

Citroën hydropneumatic suspension — now proved in over 20 years' production experience on hundreds of thousands of cars — provides a shock absorption system that is simple, dependable and uniquely effective.

The ride is always level, too, because the hydropneumatic system maintains a constant height between the body of the car and the ground, adjusting automatically to changes of load in the car.

The height of the car can also be adjusted manually by a lever inside. The four heights are normal driving, higher for driving over rutted tracks or through water or snow and higher still for wheel changing: the suspension providing the jacking power. The fourth, low level is for maintenance.

Motoring long distances can, even in the most expensive cars, leave the driver exhausted and his passengers aching. Citroën hydropneumatic suspension, together with the well-designed control layout and seating, provides the most comfortable, relaxing answer yet.

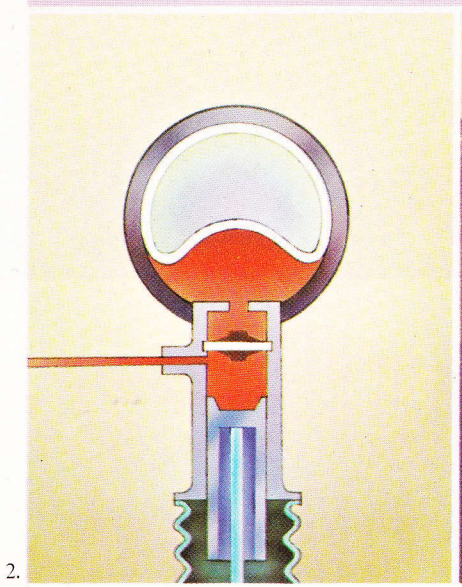
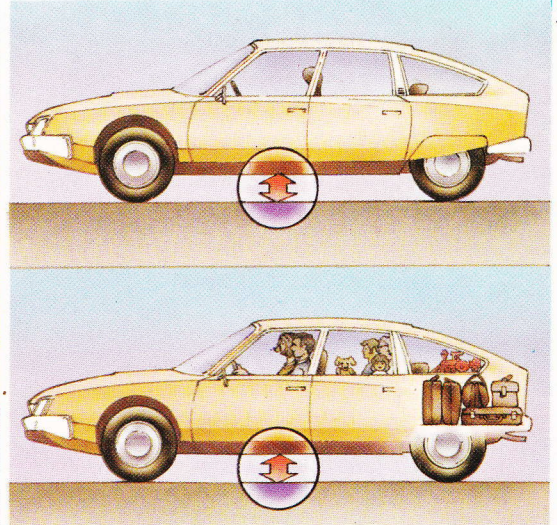
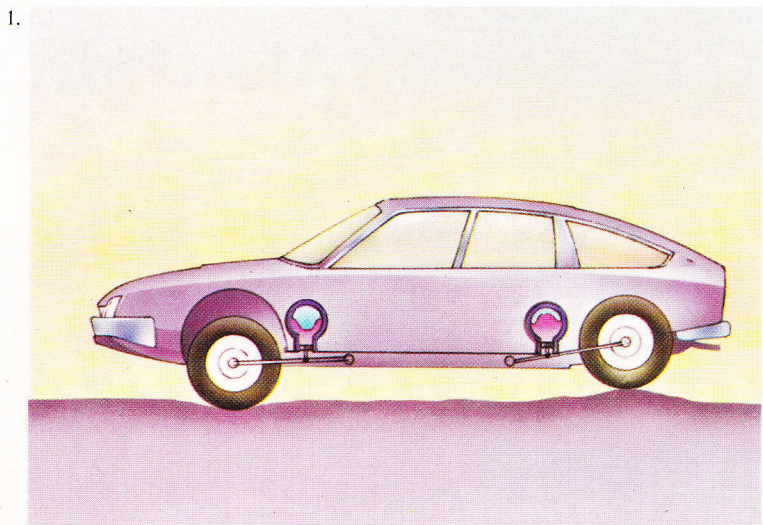


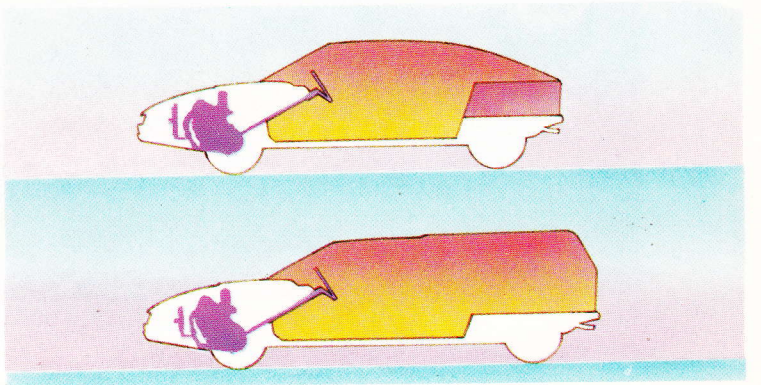
1. The road surface is rough and irregular. But between you and the bumps is Citroën hydropneumatic suspension.

2. Each wheel of the CX is independently sprung, with its own hydropneumatic shock absorbing sphere. Road shocks are transmitted progressively by a fluid to a gas which absorbs them.

3. The hydropneumatic system also incorporates front and rear height correctors. No matter how heavy or light you travel, the CX automatically adjusts to a constant driving height. This adds to comfort, and also to good handling and road adhesion.

4. Quietness is an important part of comfort. On this ridged track the CX is checked for freedom from vibrations.







A PLACE TO RELAX.

If you have room to relax, then you can concentrate so much more easily. And for longer.

The CX gives the driver every opportunity and facility to drive well, and the space and comfort for passengers to enjoy their motoring.

The front seats, with headrests, are fully adjustable and ergonomically designed for back and leg support. Inertia reel front seat belts are

standard equipment on all CX models.

Upholstery is luxurious Jersey cloth, cool in summer and warm to the touch in winter. Floors are deeply carpeted, and the car carefully sound-proofed. As the diagrams show, the transverse-mounted engine and boot design allow maximum space inside the car within compact overall dimensions.

THE MOST UNCOMPROMISING DUAL-PURPOSE CAR YET.

The new CX Safari estate is lower, sleeker and a little shorter than the old Safari.

Yet it's even bigger where it matters. The new CX has a larger boot and, with the rear seat folded, more loadspace than its predecessor.

It's also the most comfortable and driveable estate car yet produced, which is why we label it 'uncompromising'.

Most estates give you a hard ride and/or indifferent handling. This is because the springs have to be strengthened for loadcarrying, and their design — usually derived from a saloon — was not conceived for good handling with a big body and heavy load.

Citroën answers these problems in two words: hydropneumatic suspension. As shown in a previous

section, the hydropneumatic system is automatically self-levelling under any load and makes a significant contribution to CX handling qualities.

So with the CX Safari you get the best of all estate car worlds. A strong, rugged loadcarrier. A car which rides and handles much better than most saloons, and is unaffected by variations in the weight carried. A car which has the sleek and sophisticated looks for any occasion.

The new CX2400 Safari has the more powerful 2347 cc engine. The new CX2200 Diesel Safari offers the extra economy of diesel motoring.

Both models have power-operated VariPower steering as standard.



1. The CX Safari has the length, width and extra roof height to cope with bulky loads. Put in as much as half a ton, and the front and rear hydropneumatic height correctors still keep the car at a constant driving height.

2. On the CX Safari models, the disc brakes are of the ventilated type at both front and rear. Ventilation increases with speed, so that braking power is always operating at peak efficiency.

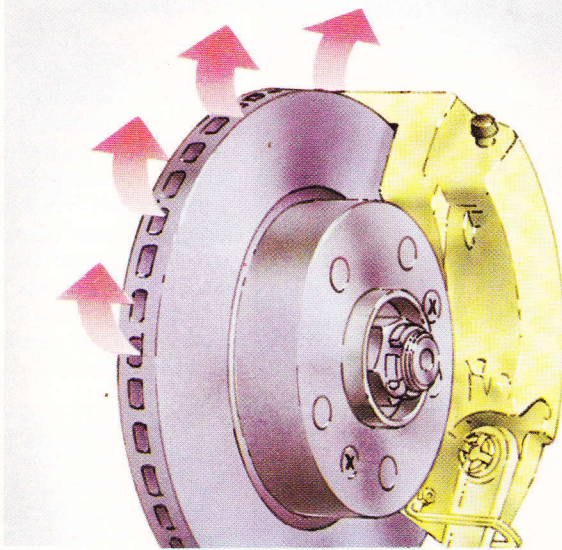
3. The Safari boot is a massive 39.37 cu ft with the rear seat in position. Folding the rear seat takes only seconds, and increases loadspace to no less than 71.69 cu ft.

4. When you follow a classic like the old Safari, you have to be better than good. From every angle—space, strength, safety, style—the new CX Safari marks a major advance in estate car design and construction.

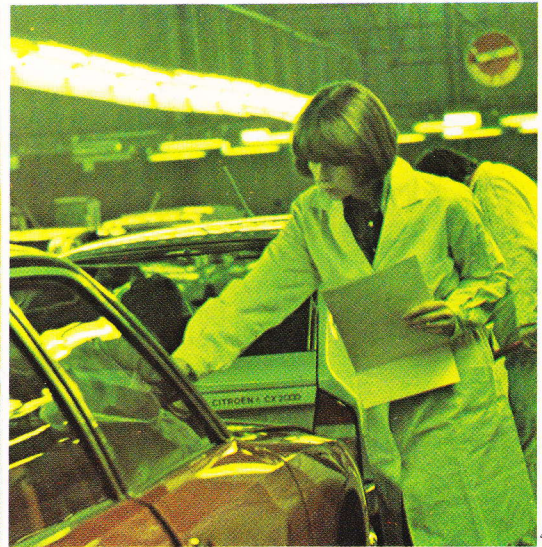
1.



2.



3.



4.



CX2000 Confort saloon
Warning lights: choke, low fuel, battery, oil pressure, oil temperature, hydraulic pressure, front brake pad wear, sidelights, headlights, main beam, indicators, heated rear window, hazard warning lights. Revolving drum speedometer Trip mileage recorder Electric clock Day/night driving mirror

Heated rear window
2-speed single-arm windscreen wiper
Electric screenwashers
Reversing lights
4 fresh air vents (2 central, 2 side)
3-speed fresh air blower
2 swivelling sun visors
Vanity mirror
Map pocket on driver's sun visor
Cigar lighter, illuminated
Front ashtray, illuminated

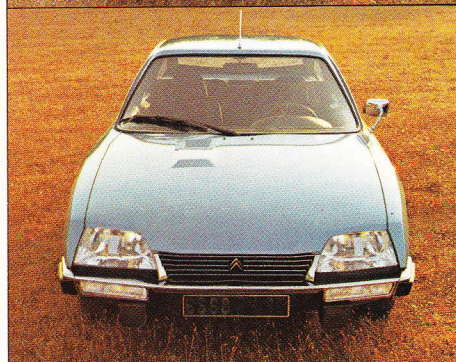
2 rear ashtrays
Interior light
Lockable glove box, illuminated
Boot light
Rear coat hooks
Front inertia reel seat belts
Fixing points for rear seat belts
Reclining front seats
Front seat headrests
Jersey cloth seat upholstery
Smooth-pile carpet



CX2400 Super/CX2200 Super Diesel saloons
Warning lights: choke, (CX2400 Super only), low fuel, battery, oil pressure, oil temperature, water temperature, hydraulic pressure, front brake pad wear, handbrake, sidelights, headlights, main beam, indicators, heated rear window, hazard warning lights, pre-heater lamp (CX2200D only).

Trip mileage recorder
Revolving drum speedometer
Electric tachometer (CX2400 Super only)
Electric clock
Day/night driving mirror
Heated rear window
Single-arm windscreen wiper, 2-speed single-arm windscreen wiper
Reversing lights
Air horn

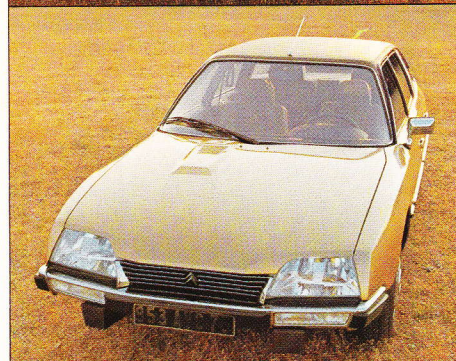
Pneumatic engine oil level gauge
4 fresh air vents (2 central, 2 side)
3-speed fresh air blower
2 swivelling sun visors
Vanity mirror
Map pocket on driver's sun visor
Cigar lighter, illuminated
Front ashtray, illuminated
2 rear ashtrays
Electric window winders, front doors



CX2400 Pallas saloon
Warning lights: choke, low fuel, battery, oil pressure, oil temperature, water temperature, hydraulic pressure, front brake pad wear, handbrake, sidelights, headlights, main beam, indicators, heated rear window, hazard warning lights. Trip mileage recorder Revolving drum speedometer Electric tachometer

Electric clock
Day/night driving mirror
Heated rear window
2-speed single-arm windscreen wiper
Electric screenwashers
Reversing lights
Air horn
Pneumatic engine oil level gauge
4 fresh air vents (2 central, 2 side)

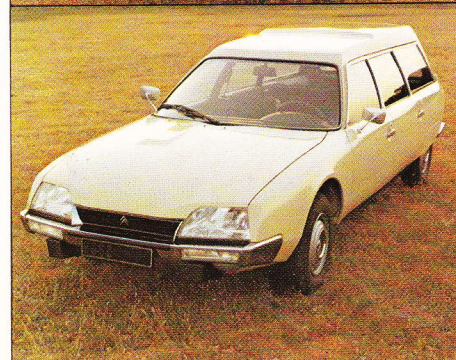
3-speed fresh air blower
2 swivelling sun visors
Vanity mirror
Map pocket on driver's sun visor
Cigar lighter, illuminated
Front ashtray, illuminated
2 rear ashtrays
Electric window winders, front
Large interior light
2 rear roof lights



CX2400 Prestige saloon
Warning lights: choke, low fuel, battery, oil pressure, oil temperature, water temperature, hydraulic pressure, front brake pad wear, handbrake, sidelights, headlights, main beam, rear fog lights, heated rear window, hazard warning lights. Trip mileage recorder Revolving drum speedometer Electric tachometer

Electric clock
Day/night driving mirror
Door mirror electrically operated from inside car
Heated rear window
2-speed single-arm windscreen wiper
Electric screenwashers
Reversing lights
Rear fog lights
Air horn

Pneumatic engine oil level gauge
Air conditioning
4 fresh air vents (2 central, 2 side)
3-speed fresh air blower
High-power heating system
2 swivelling sun visors
2 side swivelling sun visors, rear
Vanity mirror
Map pocket on driver's sun visor



CX2400 Safari Super/CX2200 Safari Super Diesel estates
Warning lights: choke (CX2400 Super only), low fuel, battery, oil pressure, oil temperature, water temperature, hydraulic pressure, front brake pad wear, sidelights, headlights, main beam, indicators, heated rear window, hazard warning lights. Revolving drum speedometer Electric tachometer (CX2400 Safari only)

Trip mileage recorder
Electric clock
Day/night driving mirror
Heated rear window
2-speed single-arm windscreen wiper
Electric screenwashers
Rear window wash/wiper
Reversing lights
Pneumatic engine oil level gauge
4 fresh air vents

(2 central, 2 side)
3-speed fresh air blower
2 swivelling sun visors
Vanity mirror
Map pocket on driver's sun visor
Cigar lighter, illuminated
Front ashtray, illuminated
2 rear ashtrays
Central interior light
Front door pockets

Rear seat central armrest
Chrome trim on side windows
VariPower steering

OPTIONS

Metallic paint
Manual steering

Large interior light
Lockable glove box, illuminated
Boot light
Door pockets, front
Rear coat hooks
Aerial and 2 speakers
Front inertia reel seat belts
Fixing points for rear seat belts
Reclining front seats
Front seat headrests
Jersey cloth seat upholstery
Deep-pile carpet

Rear seat central armrest
Pockets in rear of front seats
Rubber protective strip on rear bumper
VariPower steering

OPTIONS

Both models:
Metallic paint
Tinted glass package 1
CX2400 only:
C-matic transmission

Courtesy light operated by front and rear doors opening
Map reading light
Lockable glove box, illuminated
Boot light
Front seat headrests
Rear coat hooks
Aerial and 2 speakers
Front inertia reel seat belts
Reclining front seats
Front seat headrests

De-luxe Jersey cloth seat upholstery
Deep-pile carpet
Carpeted rear parcel shelf
Rear seat central armrest
Side pockets on front seats
Side protective strips
Rubber protective strip on rear bumper
Rubber facings on overriders, front and rear

Pallas wheel trims
Stainless exhaust trim
Chrome window trim piped in black
Chrome door mirror
VariPower steering

OPTIONS

C-matic transmission
Metallic paint
Tinted glass package 1
Air-conditioning with tinted glass package 1
Leather upholstery

Front cigar lighter, illuminated
2 rear cigar lighters, illuminated
Front ashtray, illuminated
Rear ashtray on central arm support
Pockets on front doors
Electric window winders, front and rear
Large interior light
2 rear roof lights

Courtesy light operated by front and rear doors opening
Map reading light
Lockable glove box, illuminated
Boot light
Front and rear seat headrests
Rear coat hooks
Footrests for rear seat passengers
Aerial and 4 speakers
Front inertia reel seat belts
Reclining front seats

De-luxe Jersey cloth seat upholstery, button-backed
Rear central arm support
Pockets in backs of front seats
Deep-pile carpet
Carpeted rear parcel shelf
Prestige wheel trims
Stainless exhaust trim
Vinyl roof
Side protective strips
Rubber protective strip on rear bumper

Rubber facings on overriders, front and rear
Chrome window trim piped in black
Tinted glass package 1
Metallic paint
VariPower steering

OPTION

Leather upholstery

Lockable glove box, illuminated
Boot light
Rear coat hooks
Aerial and 2 speakers
Front inertia reel seat belts
Fixing point for rear seat belts
Reclining front seats
Front seat headrests
Jersey cloth seat upholstery
Rear seat central armrest
Pockets in backs of front seats

Folding rear seat
Deep-pile carpet
Rubber protective strip on rear bumper
Chrome window trim
VariPower steering

OPTIONS

Both models:
Metallic paint
Tinted glass package 2
CX2400 Safari only:
C-matic transmission
Air-conditioning with tinted glass package 2

Tinted glass package 1 consists of graded tinted windscreen, tinted glass side and rear windows, sun visors on rear side windows and sunblinds for rear window.

Tinted glass package 2 is as package 1, but without sunblinds for rear window.

TECHNICAL DATA

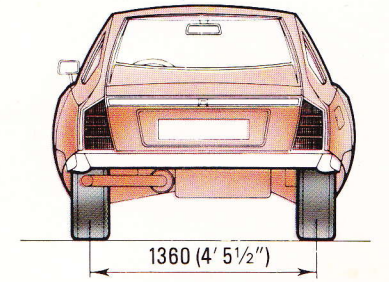
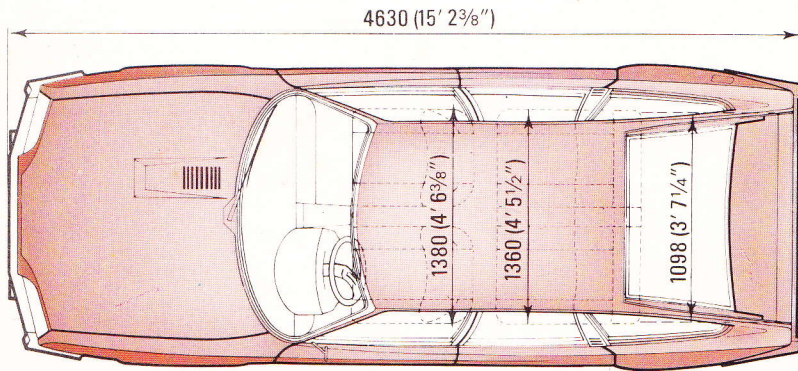
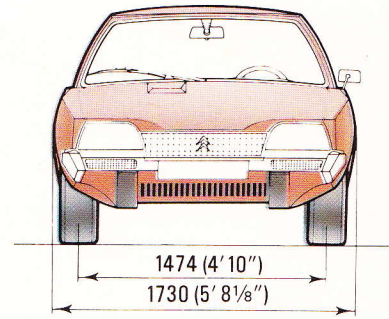
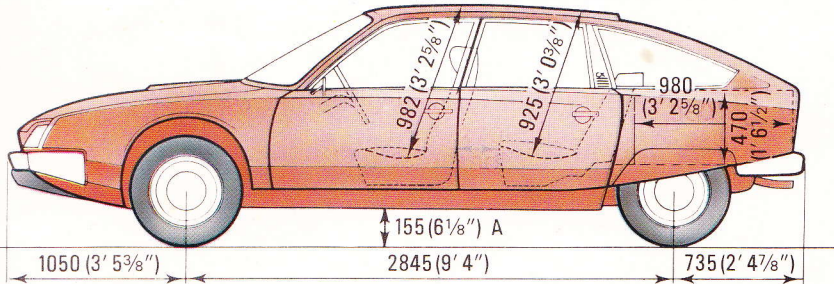
		2000	2400	2200 diesel
Cubic capacity		1985cc	2347cc	2175cc
Number of cylinders		4 in line	4 in line	4 in line
Cooling system		Water-cooled, electric fan with thermostatic control.	Water-cooled, electric fan with thermostatic control.	2 electric fans with thermostatic control
Battery		12V 225/45Ah	12V 275/55Ah	12V 440/88Ah
Alternator		1008W (72Ah)	1008W (72Ah)	1008W (72Ah)
Clutch		← Diaphragm type, mechanical control →		
Transmission		Front wheel drive, gearbox with 4 synchromesh forward speeds, gear control by floor-mounted lever, tri-axe constant velocity joints at gearbox drive-outlets, ball type constant velocity joints at wheel end. Optional at extra cost on CX2400 Super and Pallas: C-matic torque convertor semi-automatic transmission, no clutch pedal, gearbox with 3 forward speeds, gear control by floor-mounted lever.		
Steering		Powered rack and pinion steering. VariPower gives variable 'feel' as the speed of the car alters; prevents the wheels deflecting when hitting obstacles; gives powered return to a straight line position when steering wheel is released. Manual steering is also available on the CX2000 Comfort.		
Construction		Monocoque body shell joined by flexible mountings to an underframe.		
Suspension		Hydropneumatic; 4 independent wheels, height correctors front and rear, maintaining a constant ground clearance whatever the load in the vehicle; ground clearance is controlled by using a lever on the centre console between the front seats.		
Capacities:	fuel tank	15 gall (68 litre)	15 gall (68 litre)	15 gall (68 litre)
	engine oil	1 gall (approx 4.5 litre)	1 gall (approx 4.5 litre)	1 gall (approx 4.5 litre)
	gearbox oil	3 pints (approx 1.7 litre)	3 pints (approx 1.7 litre)	3 pints (approx 1.7 litre)
	hydraulic fluid	7 pints (approx 4 litre)	7 pints (approx 4 litre)	7 pints (approx 4 litre)
Bore and stroke		86 x 85.5mm	93.5 x 85.5mm	90 x 85.5mm
Compression ratio		9:1	9:1	22.25:1
Horsepower DIN		102 bhp at 5500 rpm	115 bhp at 5750 rpm	66 bhp at 4500 rpm
Torque DIN		112.1 ft lb at 3000 rpm (15.5m/kg at 3000 rpm)	135 ft lb at 2800 rpm (18.2m/kg at 2800 rpm)	92 ft lb at 2750 rpm (12.8m/kg at 2750 rpm)
Carburettor		Dual choke	Dual choke	
Tyres, front:	saloons	185HR-14XVS (VariPower) 185SR-14ZX (manual steering)	185HR-14XVS	185HR-14XVS or 185SR-14ZX
	estates		185HR-14XVS	185HR-14XVS or 185SR-14ZX
	C-matic		185HR-14XVS	
Tyres, rear:	saloons	175HR-14XVS	185HR-14XVS	175HR-14XVS or 175SR-14ZX
	estates		185HR-14XVS	185HR-14XVS or 175SR-14ZX
	C-matic		175HR-14XVS	
Brakes, front:		Ventilated discs	Ventilated discs	Ventilated discs
Brakes, rear:	saloons	Discs	Discs	Discs
	estates		Ventilated discs	Ventilated discs
Top speed:	saloons	108mph (174kph)	112mph (181kph)	91mph (146kph)
	estates		108mph (174kph)	90mph (144kph)
	C-matic		110mph (177kph)	
	Prestige		109mph (176kph)	
Fuel consumption (French Government tests)				
Constant 55 mph:	saloons	34.46 mpg (8.2 litre/100km)	34.04 mpg (8.3 litre/100km)	44.83 mpg (6.3 litre/100km)
	estates		29.43 mpg (9.6 litre/100km)	44.12 mpg (6.4 litre/100km)
	C-matic		31.04 mpg (9.1 litre/100km)	
	Prestige		31.75 mpg (8.9 litre/100km)	
Typical town driving:	saloons	19.89 mpg (14.2 litre/100km)	19.48 mpg (14.5 litre/100km)	28.25 mpg (10.0 litre/100km)
	estates		19.09 mpg (14.8 litre/100km)	28.25 mpg (10.0 litre/100km)
	C-matic		18.96 mpg (14.9 litre/100km)	
	Prestige		19.09 mpg (14.8 litre/100km)	
Vehicle weight:	saloons	2789lb (1265kg)	2866lb (1301kg)	2953lb (1341kg)
	estates		3119lb (1405kg)	3185lb (1446kg)
Gross vehicle weight, laden:	saloons	3836lb (1740kg)	3946lb (1791kg)	4022lb (1826kg)
	estates		4609lb (2095kg)	4650lb (2111kg)
Max towing weight with standard towing equipment:	saloons	1984lb (900kg)	1984lb (900kg)	1984lb (900kg)
	estates		1984lb (900kg)	1984lb (900kg)
Max towing weight with additional equipment:	saloons	2866lb (1300kg)	2866lb (1300kg)	2866lb (1300kg)
	estates		2866lb (1300kg)	2866lb (1300kg)
Max nose weight		220lb (100kg)	220lb (100kg)	220lb (100kg)
Track, front:		4' 10" (1474mm)	14' 10" (1474mm)	4' 10" (1474mm)
Track, rear:	saloons	4' 5½" (1360mm)	4' 5½" (1360mm)	4' 5½" (1360mm)
	estates		4' 6¾" (1390mm)	4' 6¾" (1390mm)
Wheelbase:	saloons	9' 4" (2845mm)	9' 4" (2845mm)	9' 4" (2845mm)
	estates		10' 1⅝" (3095mm)	10' 1⅝" (3095mm)
	Prestige		10' 1⅝" (3095mm)	
Length overall:	saloons	15' 2⅜" (4630mm)	15' 3½" (4660mm)	15' 3½" (4660mm)
	estates		16' 1¾" (4920mm)	16' 1¾" (4920mm)
	Prestige		16' 1¼" (4910mm)	
Width overall		5' 8⅛" (1730mm)	5' 8" (1730mm)	5' 8" (1730mm)

TECHNICAL DATA

		2000	2400	2200 diesel
Height:	saloons estates	4' 5½" (1360mm)	4' 5½" (1360mm) 4' 9⅝" (max) (1465mm)	4' 5½" (1360mm) 4' 9⅝" (max) (1465mm)
Ground clearance		0' 6" (155mm)	0' 6" (155mm)	0' 6" (155mm)
Max roof rack weight		176lb (330kg)	176lb (330kg)	176lb (330kg)
Boot volume:	saloons estates	16.8cuft (475 dm ³)	16.8cu ft (475 dm ³) 39.37 cuft (1115 dm ³) rear seat in position 71.69cuft (2030dm ³) rear seat folded	16.8cuft (475 dm ³)

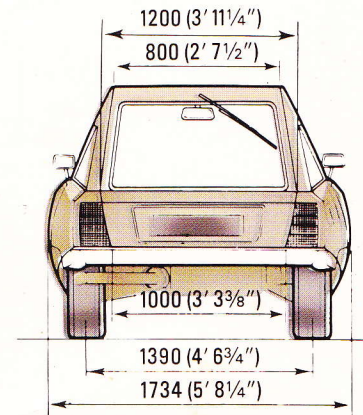
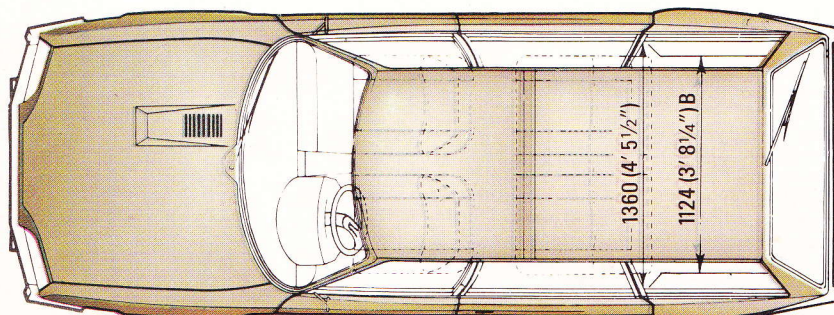
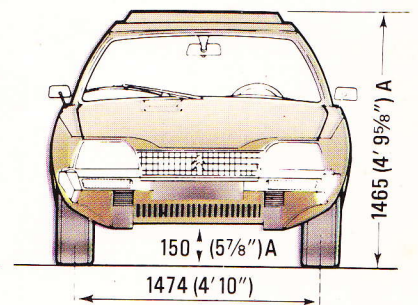
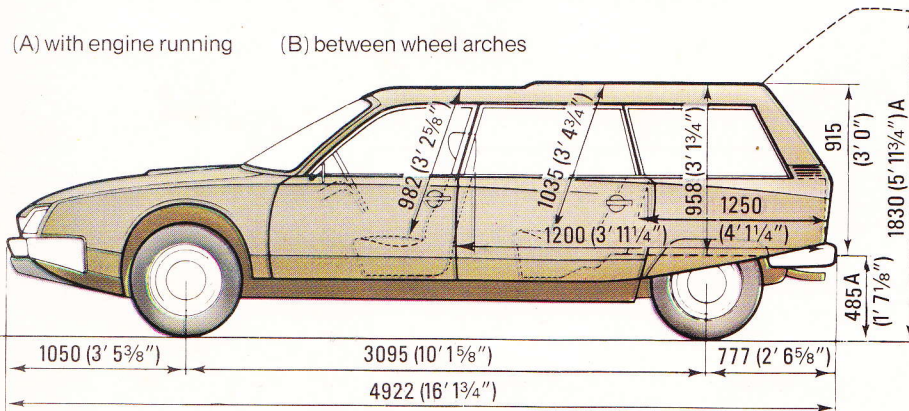
DIN (Deutsche Industrie Normen) figures are the most widely-accepted standard in the European motor industry.

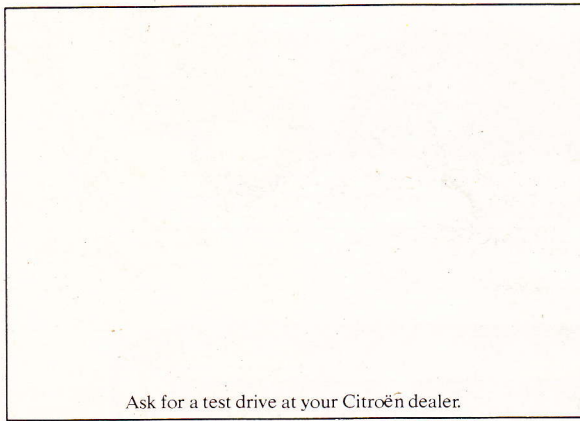
For colours available consult any Citroën dealer.



(A) with engine running

(B) between wheel arches





Ask for a test drive at your Citroën dealer.

NOTE: The information contained in this brochure was accurate at the date of going to press (1st August 1976). The company however reserves the right, while preserving the essential characteristics of the models described and illustrated, to introduce at any time, modifications, changes to details, equipment or accessories as may be considered necessary to improve the models described or for any reason of a constructional or operational nature. Every endeavour will be made to bring the brochure up to date from time to time but in order to avoid any misunderstanding any person interested should enquire of the company or its agents as to whether there have been material alterations since the date of the issue of this brochure.

Citroën Cars Ltd. Mill Street, Slough SL2 5DE.
Telephone: Slough 23808. Telex: 847053.